

AGRICULTURAL TIRES

TRACTOR / HYBRID / LAWN & GARDEN / GOLF CART / ATV
SPEED SPRAYER / SKID LOADER

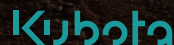


AGRICULTURAL TIRES


TRACTOR	04
HYBRID	18
LAWN & GARDEN	20
GOLF CART	22
ATV	23
SPEED SPRAYER	24
SKID LOADER	25



ORIGINAL EQUIPMENT



TIRE SPECIFICATIONS BY HORSEPOWER RANGE

HORSE POWER							UNAVAILABLE SIZES					
20	FRONT	7-12	FRONT	7-12 23X8.50-12	FRONT	6-12	FRONT	6-12	FRONT			
	REAR	11.2-16	REAR	11.2-16 12-16.5	REAR	9.5-20	REAR	9.5-16	REAR			
30	FRONT	7-16	FRONT	7-16	FRONT	8-16	FRONT		FRONT			
	REAR	11.2-24	REAR	12.4-24	REAR	12.4-24	REAR		REAR			
40	FRONT	9.5-16 / 6-14 7-16	FRONT	9.5-20 / 8-16 7-16	FRONT	7-16 / 8-16 9.5-16	FRONT	9.5-16 8-18	FRONT	9.5-16	FRONT	
	REAR	13.6-26 / 9.5-20 11.2-24	REAR	13.6-28 12.4-24	REAR	11.2-24 / 12.4-24 13.6-24	REAR	13.6-26	REAR	13.6-26 13.6-24	REAR	
50	FRONT	9.5-20 / 9.5-18 9.5-16 / 8-16	FRONT	11.2-20 / 9.5-20 8.3-20 / 9.5-16	FRONT	9.5-16 9.5-20	FRONT	8.3-20	FRONT	9.5-16 / 9.5-18 8-16	FRONT	
	REAR	14.9-28 / 13.6-28 13.6-24 / 12.4-24	REAR	14.9-30 / 13.6-28 14.9-28 / 14.9-24 13.6-26	REAR	13.6-26 14.9-28	REAR	13.6-28	REAR	13.6-26 / 13.6-24 13.6-28 / 12.4-24	REAR	
60	FRONT	11.2-20	FRONT	11.2-20	FRONT	11.2-20	FRONT	8.3-20 / 9.5-20 11.2-20	FRONT		FRONT	
	REAR	14.9-30	REAR	14.9-30	REAR	14.9-30	REAR	13.6-28 / 14.9-30 16.9-30	REAR		REAR	
70	FRONT	11.2-24	FRONT	11.2-24	FRONT	11.2-24 / 11.2-20 12.4-24	FRONT	9.5-24 11.2-20	FRONT	11.2-20 / 9.5-22 360/70R20 X	FRONT	
	REAR	16.9-30	REAR	16.9-30	REAR	16.9-30 14.9-30	REAR	16.9-30	REAR	16.9-30 12.4-36	REAR	360/70R20
80	FRONT	11.2-24	FRONT		FRONT		FRONT	11.2-20	FRONT		FRONT	340/85R24
	REAR	16.9-30	REAR		REAR		REAR	16.9-30	REAR		REAR	420/85R34 460/85R30
90	FRONT		FRONT	12.4-24	FRONT		FRONT	11.2-24 12.4-24	FRONT	12.4-24	FRONT	
	REAR		REAR	16.9-34	REAR		REAR	16.9-34	REAR	18.4-34	REAR	
100	FRONT	12.4-24	FRONT	13.6-24	FRONT	12.4-24	FRONT	11.2-24	FRONT	12.4-24	FRONT	340/85R24
	REAR	16.9-34	REAR	18.4-34	REAR	16.9-34	REAR	16.9-34	REAR	18.4-34	REAR	420/85R34 460/85R30
110	FRONT	13.6-24	FRONT	13.6-24 380/70R28 X	FRONT	13.6-24 380/70R28 X	FRONT	11.2-24 12.4-24 13.6-24	FRONT	12.4-24 360/70R24	FRONT	380/85R28 380/70R28
	REAR	18.4-34	REAR	18.4-34 480/70R38 X	REAR	18.4-34 480/70R38 X	REAR	16.9-34 16.9-38	REAR	18.4-34	REAR	460/85R38 480/70R38
120	FRONT	13.6-24	FRONT	14.9-24 380/70R28 X	FRONT	380/85R24 12.4-24 380/85R28	FRONT		FRONT		FRONT	380/70R28
	REAR	18.4-34	REAR	18.4-34 480/70R38 X	REAR	460/85R38 16.9-38 420/85R38	REAR		REAR		REAR	480/70R38
130	FRONT	380/85R28 340/85R28	FRONT	380/85R28 380/70R28 X 440/65R28 X	FRONT	380/85R28	FRONT		FRONT		FRONT	16.9R28 420/70R28 380/85R28
	REAR	460/85R38	REAR	460/85R38 480/70R38 X 540/65R38 X	REAR	460/85R38	REAR		REAR		REAR	20.8R38 520/70R38 460/85R38
140	FRONT	380/85R28 340/85R28	FRONT	380/85R28	FRONT	380/85R28	FRONT	14.9-24	FRONT		FRONT	
	REAR	460/85R38	REAR	460/85R38	REAR	460/85R38	REAR	18.4-38	REAR		REAR	
150	FRONT	380/85R28	FRONT	480/65R28 X 420/85R28	FRONT	380/70R28 X 340/85R28	FRONT	540/65R28 X	FRONT		FRONT	480/70R28 480/65R28 380/70R28
	REAR	460/85R38	REAR	600/65R38 X 520/85R38	REAR	520/70R38 420/85R38	REAR	650/65R38 X	REAR		REAR	600/65R38 650/65R38
160	FRONT		FRONT	480/65R28 X 420/85R28	FRONT	480/65R24 X	FRONT		FRONT		FRONT	480/65R28 480/65R24 540/65R28
	REAR		REAR	600/65R38 X 520/85R38	REAR	540/65R38 X	REAR		REAR		REAR	600/65R38, 540/65R38 650/65R38
170	FRONT		FRONT	540/65R28 X 480/70R28	FRONT		FRONT	540/65R28 X	FRONT		FRONT	540/65R28
	REAR		REAR	650/65R38 X 580/70R38 X	REAR		REAR	650/65R38 X	REAR		REAR	650/65R38 580/70R38
180	FRONT	420/85R28 540/65R28 X	FRONT		FRONT	540/65R28 X	FRONT		FRONT		FRONT	540/65R28
	REAR	520/85R38 650/65R38 X	REAR		REAR	650/65R38 X	REAR		REAR		REAR	650/65R38
190	FRONT	480/70R28 540/65R30 X	FRONT		FRONT	540/65R30 X	FRONT		FRONT		FRONT	540/65R30 600/65R28 X
	REAR	580/70R38 X 650/65R42 X	REAR		REAR	650/65R42 X	REAR		REAR		REAR	580/70R38 650/65R42 710/70R38
210	FRONT	540/65R30 X	FRONT	600/60R28 X	FRONT	540/65R30 X	FRONT		FRONT		FRONT	540/65R30 600/60R28
	REAR	650/65R42 X	REAR	710/60R38 X	REAR	650/65R42 X	REAR		REAR		REAR	650/65R42 710/60R38
220	FRONT		FRONT	600/60R28 X	FRONT		FRONT		FRONT		FRONT	600/65R28 X
	REAR		REAR	710/60R38 X	REAR		REAR		REAR		REAR	710/60R38 710/70R38 X
250	FRONT	600/70R28 X	FRONT		FRONT	600/70R28 X	FRONT		FRONT		FRONT	600/70R28
	REAR	710/70R42 X	REAR		REAR	710/70R42 X	REAR		REAR		REAR	710/70R42
260	FRONT		FRONT	600/65R28 X	FRONT		FRONT		FRONT		FRONT	600/65R28 X
	REAR		REAR	710/70R38 X	REAR		REAR		REAR		REAR	710/70R38 X
290	FRONT	600/70R30 X	FRONT		FRONT	600/70R28 X	FRONT		FRONT		FRONT	600/70R30 600/70R28
	REAR	710/70R42 X	REAR		REAR	800/70R38 X	REAR		REAR		REAR	710/70R42 800/70R38
300	FRONT		FRONT	600/65R28 X	FRONT		FRONT		FRONT		FRONT	600/65R28 600/70R30
	REAR		REAR	710/70R38 X	REAR		REAR		REAR		REAR	710/70R38 710/70R42
310	FRONT		FRONT	650/60R34 X	FRONT		FRONT		FRONT		FRONT	650/60R34
	REAR		REAR	710/75R42 X	REAR		REAR		REAR		REAR	710/75R42



TRACTOR



NEW
HS624

**RADIAL 85 SERIES
TRACTOR TIRE**

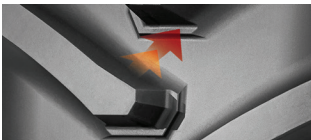
HS621

**RADIAL 70 SERIES
TRACTOR TIRE**

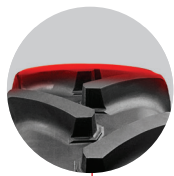


TECHNOLOGY HS624

UNIQUE TREAD PATTERN DESIGN



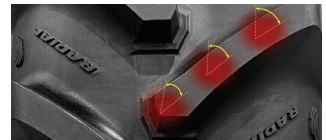
Ride comfort improvement through enhanced vibration characteristics by strengthening lug-to-lug connectivity during driving.



RIDE COMFORT & STABILITY

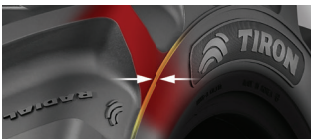
Special belt application reduces vibration and noise, delivering a comfortable ride and stable driving performance.

OPTIMIZED LUG DESIGN

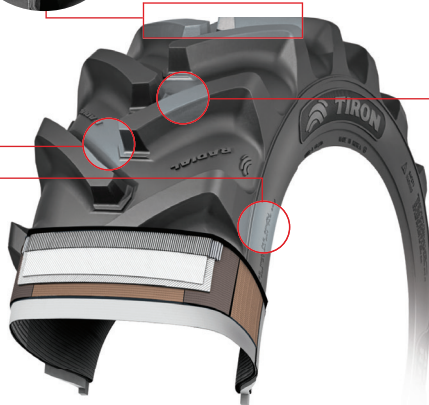


Enhanced driving stability at the center and maximized traction at the shoulder.

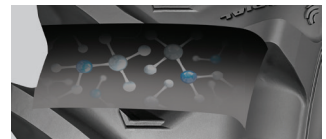
SIDEWALL PROTECTOR



Reinforced outer rubber structure minimizes the risk of tire damage from external impacts and debris.



HIGH-PERFORMANCE COMPOUND



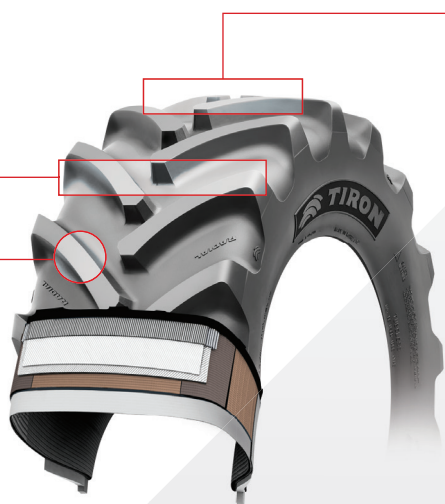
Advanced compound technology delivers excellent cut and wear resistance as well as superior grip performance.

TECHNOLOGY HS621

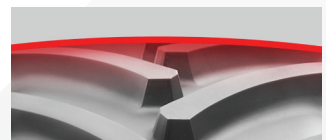
WIDE TREAD CONTACT



Enhanced traction and ride comfort with a stable design

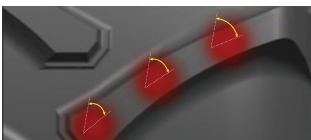


RIDE COMFORT & STABILITY



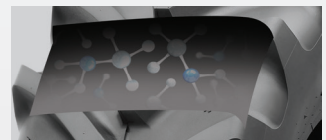
Special belt application reduces vibration and noise, delivering a comfortable ride and stable driving performance.

OPTIMIZED LUG DESIGN



Enhanced driving stability at the center and maximized traction at the shoulder

HIGH-PERFORMANCE COMPOUND



Enhanced compound technology provides excellent cut and wear resistance as well as superior grip performance.



624

NEW



621

> TRACTOR

624

***RADIAL TIRE**

SIZE	PR	TYPE	APPRVD. RIM	PERMISSIBLE RIMS (inch)	O.D.(mm)	O.W.(mm)	S.D.(mm)	PITCH (ea)	MAX.LOAD		INFLATION		LI	SS
									kg	lbs	kg/cm ²	psi		
11.2R24(280/85R24)	114 A8	T/L	W10	W9	1095	284	40.0	19	1180.0	2601	1.60	23	114	A8
13.6R24(340/85R24)	121 A8	T/L	W12	W11	1190	340	43.0	18	1450.0	3197	1.60	23	121	A8
*14.9R24(380/85R24)	131 A8	T/L	W13	W11, W12	1245	378	45.0	18	1950.0	4300	1.60	23	131	A8
*14.9R28(380/85R28)	133 A8	T/L	W13	W11, W12	1357	380	45.0	19	2060.0	4540	1.60	23	133	A8
16.9R30(420/85R30)	137 A8	T/L	W15L	W14L	1475	429	46.0	19	2300.0	5070	1.60	23	137	A8
18.4R34(460/85R34)	144 A8	T/L	W16L	W15L	1645	465	50.0	20	2800.0	6172	1.60	23	144	A8
*18.4R38(460/85R38)	149 A8	T/L	W16L	W15L	1750	467	50.0	21	3250.0	7150	1.60	23	149	A8

*Scheduled for release

621

***RADIAL TIRE**

SIZE	PR	TYPE	APPRVD. RIM	PERMISSIBLE RIMS (inch)	O.D.(mm)	O.W.(mm)	S.D.(mm)	PITCH (ea)	MAX.LOAD		INFLATION		LI	SS
									kg	lbs	kg/cm ²	psi		
*440/65R28	131 A8	T/L	W14L	W13, W15L	1283	441	45.0	21	1950.0	4300	1.60	23	131	A8
*540/65R38	147 A8	T/L	W18L	W16L	1667	540	49.0	23	3075.0	6800	1.60	23	147	A8
*260/70R16	109 A8	T/L	W8	W9	770	258	30.0	16	1030.0	2270	2.40	35	109	A8
*280/70R18	144 A8	T/L	W9	W10	849	282	32.0	17	1180.0	2600	2.40	35	114	A8
300/70R20	120 A8	T/L	W9	W10	955	290	34.0	17	1400.0	3085	2.40	35	120	A8
380/70R20	132 A8	T/L	W12	W11, W13	1082	380	42.0	17	2000.0	4410	2.40	35	132	A8
360/70R24	122 A8	T/L	W11	W10, W12	1143	350	41.0	19	1500.0	3300	1.60	23	122	A8
380/70R24	125 A8	T/L	W12	W11, W13	1180	365	42.0	19	1650.0	3635	1.60	23	125	A8
420/70R24	134 A8	T/L	W13	W12, W14L	1262	410	44.0	19	2120.0	4680	2.00	29	134	A8
360/70R28	125 A8	T/L	W11	W10, W12	1265	352	41.0	21	1650.0	3635	1.60	23	125	A8
420/70R28	133 A8	T/L	W13	W12, W14L	1349	418	44.0	20	2060.0	4540	1.60	23	133	A8
480/70R28	140 A8	T/L	W15L	W14L, W16L	1410	473	49.0	19	2500.0	5510	1.60	23	140	A8
480/70R34	149 A8	T/L	W15L	W14L, W16L	1580	475	50.0	21	3250.0	7150	2.40	35	149	A8
520/70R34	148 A8	T/L	W16L	W15L, W18L	1640	510	53.0	20	3150.0	6950	1.60	23	148	A8
520/70R38	150 A8	T/L	W16L	W15L, W18L	1755	505	54.0	21	3350.0	7400	1.60	23	150	A8

*Scheduled for release



616

616

*RADIAL TIRE

SIZE	PR	TYPE	APPRVD. RIM	PERMISSIBLE RIMS (inch)	O.D.(mm)	O.W.(mm)	S.D.(mm)	PITCH (ea)	MAX.LOAD		INFLATION		LI	SS
									kg	lbs	kg/cm ²	psi		
11.2R20(280/85R20)	111 A8	T/L	W10	W8, W9	1000	280	40.0	18	1090.0	2403	1.60	23	111	A8
11.2R24(280/85R24)	114 A8	T/L	W10	W9	1105	280	40.0	19	1180.0	2601	1.60	23	114	A8
12.4R24(320/85R24)	119 A8	T/L	W11	W10, W9	1156	308	41.0	19	1360.0	2998	1.60	23	119	A8
13.6R24(340/85R24)	121 A8	T/L	W12	W11	1190	345	43.0	19	1450.0	3197	1.60	23	121	A8
14.9R24(380/85R24)	126 A8	T/L	W13	W12, W11	1245	378	44.0	19	1700.0	3748	1.60	23	126	A8
13.6R28(340/85R28)	123 A8	T/L	W12	W11	1295	345	45.0	19	1550.0	3417	1.60	23	123	A8
14.9R28(380/85R28)	128 A8	T/L	W13	W12, W11	1360	378	46.0	19	1800.0	3968	1.60	23	128	A8
16.9R28(420/85R28)	136 A8	T/L	W15L	W14L	1420	433	47.0	19	2240.0	4938	1.60	23	136	A8
14.9R30(380/85R30)	129 A8	T/L	W13	W12, W11	1400	378	45.0	20	1850.0	4079	1.60	23	129	A8
16.9R30(420/85R30)	137 A8	T/L	W15L	W14L	1475	433	46.0	20	2300.0	5070	1.60	23	137	A8
18.4R30(460/85R30)	142 A8	T/L	W16L	W15L	1545	467	49.0	20	2650.0	5842	1.60	23	142	A8
16.9R34(420/85R34)	139 A8	T/L	W15L	W14L	1575	433	47.0	20	2430.0	5357	1.60	23	139	A8
18.4R34(460/85R34)	144 A8	T/L	W16L	W15L	1645	467	50.0	20	2800.0	6172	1.60	23	144	A8
16.9R38(420/85R38)	141 A8	T/L	W15L	W14L	1680	433	49.0	21	2575.0	5677	1.60	23	141	A8
18.4R38(460/85R38)	146 A8	T/L	W16L	W15L	1750	467	50.0	21	3000.0	6614	1.60	23	146	A8
20.8R38(520/85R38)	153 A8	T/L	W18L	W16L	1846	528	55.0	21	3650.0	8047	1.60	23	153	A8
580/70R38	155 A8	T/L	W18L	DW18L	1835	560	56.0	21	3875.0	8543	1.60	23	155	A8

TT = TUBE TYPE / TL = TUBELESS



TRACTOR



NEW

HS625

**R1W CATEGORY
TRACTOR TIRE**

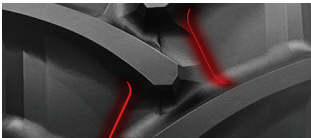
HS617

**LONG MILEAGE
R1W CATEGORY TRACTOR TIRE**



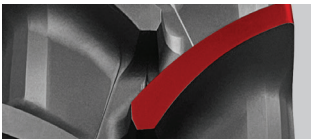
TECHNOLOGY HS625

CENTER WIDE REINFORCEMENT BAR

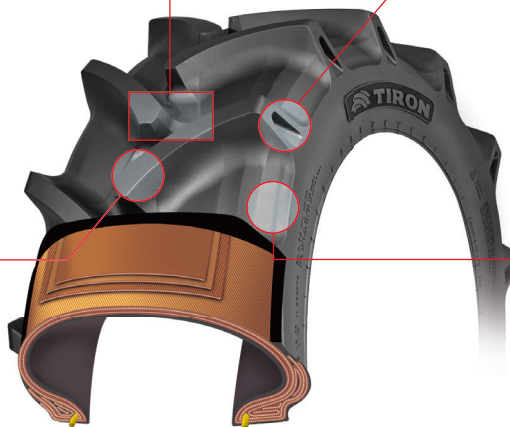


Center wide reinforcement bar suppresses block movement and enhances pattern image.

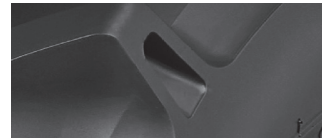
PADDY FIELD PATTERN



Applied pattern specialized for paddy fields

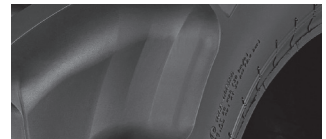


WIDE COOLING GROOVES



Wide and deep heat-dissipation grooves minimize heat generation while driving.

STRAIGHT PROFILE APPLIED



Straight profile applied for a robust pattern design

TECHNOLOGY HS617

WIDE CENTER REINFORCEMENT BAR

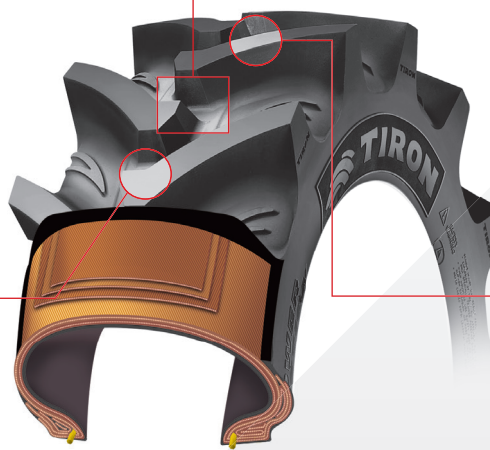


Wide and deep reinforcement bar suppresses block movement and increases rigidity and wear resistance under heavy loads.

LEFT/RIGHT LUG OVERLAP



Improved load distribution while driving ensures excellent ride comfort and handling stability.



WIDE PROFILE DESIGN



Design optimized for severe conditions on front wheels minimizes block movement and bottom impact during sudden braking and acceleration.

HIGH-QUALITY COMPOUND



Specialized compound for front tractor tires provides excellent wear performance and significantly extends tire life.

TRACTOR



625

NEW



622

625

***R-1W**

SIZE	PR	TYPE	APPRVD. RIM	PERMISSIBLE RIMS (inch)	O.D.(mm)	O.W.(mm)	S.D.(mm)	PITCH (ea)	MAX.LOAD		INFLATION		LI	SS
									kg	lbs	kg/cm ²	psi		
9.5-16	6	T/T	W8	-	840	250	32.0	15	725.0	1600	2.20	32	96	A6
9.5-20	6	T/T	W8	-	943	240	42.0	16	840.0	1850	2.20	32	101	A6
11.2-20	8	T/T	W9	-	1005	285	43.7	14	1120.0	2470	2.40	34	112	A6
12.4-24	8	T/T	W11	-	1165	320	48.5	16	1445.0	3185	2.20	32	120	A6
13.6-24	8	T/T	W12	-	1225	345	54.0	16	1615.0	3560	2.20	32	124	A6
13.6-26	8	T/T	W11	-	1275	341	54.0	15	1580.0	3485	2.00	28	123	A6
14.9-28	6	T/T	W13	-	1378	385	54.8	16	1610.0	3550	1.40	20	124	A6
14.9-30	8	T/T	W13	-	1425	390	54.5	18	1930.0	4255	1.80	26	130	A6

622

***R-2**

SIZE	PR	TYPE	APPRVD. RIM	PERMISSIBLE RIMS (inch)	O.D.(mm)	O.W.(mm)	S.D.(mm)	PITCH (ea)	MAX.LOAD		INFLATION		LI	SS
									kg	lbs	kg/cm ²	psi		
18.4-34	10	T/T	W16L	-	1670	477	80.0	13	2775.0	6120	1.60	23	143	A6
	12	T/T	W16L	-	1670	477	80.0	16	3450.0	7605	2.30	33	151	A6
*18.4-38	10	T/T	W16L	-	1802	472	80.0	16	2935.0	6470	1.60	23	145	A6

*Scheduled for release



617

617

*LONG MILEAGE R-1W

SIZE	PR	TYPE	APPRVD. RIM	PERMISSIBLE RIMS (inch)	O.D.(mm)	O.W.(mm)	S.D.(mm)	PITCH (ea)	MAX.LOAD		INFLATION		LI	SS
									kg	lbs	kg/cm ²	psi		
160/90-12	4	T/T	4.00	-	632	165	26.0	13	325.0	715	1.80	26	69	A6
7-14	6	T/T	5JA	-	690	173	26.0	14	440.0	970	2.40	34	79	A6
7-16	6	T/T	5JA	-	740	180	28.0	15	500.0	1100	2.60	37	84	A6
8-16	6	T/T	W6	-	789	198	29.0	13	600.0	1325	2.40	34	90	A6
9.5-16	6	T/T	W8	-	850	250	43.0	14	725.0	1600	2.20	32	96	A6
8-18	8	T/T	W6	-	839	195	32.0	14	780.0	1720	3.20	46	99	A6
9.5-18	8	T/T	W8	-	901	250	45.0	16	900.0	1985	2.80	40	104	A6
8.3-20	8	T/T	W7	-	890	208	45.0	15	825.0	1820	3.20	46	101	A6
9.5-20	8	T/T	W8	-	943	248	44.5	16	970.0	2140	2.80	40	106	A6
11.2-20	8	T/T	W9	-	995	295	48.0	14	1120.0	2470	2.40	34	112	A6
9.5-24	8	T/T	W7	-	1056	248	43.5	16	1130.0	2490	3.00	43	112	A6
11.2-24	8	T/T	W10	-	1120	296	49.0	15	1135.0	2500	2.40	34	112	A6
12.4-24	8	T/T	W11	-	1165	320	50.0	16	1445.0	3185	2.20	32	120	A6
13.6-24	8	T/T	W12	-	1210	345	54.0	16	1615.0	3560	2.20	32	124	A6
14.9-24	8	T/T	W13	-	1265	385	50.0	15	1750.0	3860	1.80	26	127	A6
13.6-26	8	T/T	W11	-	1270	345	55.0	15	1580.0	3485	2.00	28	123	A6
13.6-28	8	T/T	W12	-	1320	350	53.5	16	1645.0	3625	2.00	28	124	A6
14.9-28	8	T/T	W13	-	1365	390	55.5	16	1865.0	4122	1.80	26	129	A6
14.9-30	8	T/T	W13	-	1419	384	55.0	17	1930.0	4255	1.80	26	130	A6
16.9-28	10	T/T	W15L	-	1460	450	57.0	18	2430.0	5355	2.00	28	139	A6
16.9-30	8	T/T	W15L	-	1495	440	58.0	19	2245.0	4949	1.60	23	136	A6
18.4-30	8	T/T	W16L	-	1536	465	55.0	19	2510.0	5535	1.60	23	140	A6
16.9-34	8	T/T	W15L	-	1578	450	58.0	19	2385.0	5260	1.60	23	138	A6
18.4-34	10	T/T	W15L	-	1635	467	55.0	20	2775.0	6120	1.60	23	143	A6

TT = TUBE TYPE / TL = TUBELESS

TRACTOR R-1W / R-2 / LONG MILEAGE R-1W



603

603

***R-1W**

SIZE	PR	TYPE	APPRVD. RIM	PERMISSIBLE RIMS (inch)	O.D.(mm)	O.W.(mm)	S.D.(mm)	PITCH (ea)	MAX.LOAD		INFLATION		LI	SS
									kg	lbs	kg/cm ²	psi		
6-12	4	T/T	5JA	-	600	155	15.0	16	268.0	590	2.00	28	62	A6
9.5-18	6	T/T	W8	-	901	250	43.0	16	600.0	1325	1.40	20	99	A6
	8	T/T	W8	-	901	250	43.0	16	900.0	1985	2.80	40	104	A6
8.3-20	6	T/T	W7	-	890	202	43.0	15	710.0	1565	2.40	34	96	A6
9.5-20	4	T/T	W8	-	943	240	42.0	16	645.0	1422	1.40	20	92	A6
	6	T/T	W8	-	943	240	42.0	16	840.0	1852	2.20	32	101	A6
	8	T/T	W8	-	943	240	42.0	16	970.0	2140	2.80	40	106	A6
8.3-22	4	T/T	W7	-	935	212	43.0	16	600.0	1325	1.60	23	90	A6
	6	T/T	W7	-	935	212	43.0	16	760.0	1675	2.40	34	125	A6
9.5-22	4	T/T	W8	-	993	250	42.0	16	690.0	1520	1.40	20	95	A8
	6	T/T	W8	-	993	250	42.0	16	900.0	1985	2.20	32	104	A8
	8	T/T	W8	-	993	250	42.0	16	1090.0	2400	3.00	43	111	A8
9.5-24	4	T/T	W7	-	1056	224	42.5	16	740.0	1630	1.40	20	97	A6
	6	T/T	W7	-	1056	224	42.5	16	940.0	2070	2.20	32	105	A6
	8	T/T	W7	-	1056	224	42.5	16	1130.0	2490	3.00	43	112	A6
12.4-24	6	T/T	W11	-	1156	315	48.5	16	1200.0	2645	1.60	23	115	A6
	8	T/T	W11	-	1156	315	48.5	16	1445.0	3185	2.20	32	120	A6
13.6-24	6	T/T	W12	-	1220	345	54.0	16	1340.0	2955	1.60	23	118	A6
	8	T/T	W12	-	1220	345	54.0	16	1615.0	3560	2.20	32	124	A6
12.4-26	4	T/T	W11	-	1220	318	60.1	14	970.0	2140	1.20	17	106	A6
	6	T/T	W11	-	1220	318	60.1	14	1145.0	2520	1.60	23	112	A6
13.6-26	4	T/L	W11	-	1268	341	54.0	15	1065.0	2350	1.00	14	110	A6
	6	T/T	W11	-	1270	341	54.0	15	1400.0	3085	1.60	23	120	A6
	8	T/T	W11	-	1270	341	54.0	15	1580.0	3485	2.00	28	123	A6
11.2-28	8	T/T	W10	-	1205	292	48.0	16	1305.0	2875	2.40	34	117	A6
12.4-28	6	T/T	W11	-	1248	317	48.5	17	1275.0	2810	1.60	23	116	A6
	8	T/T	W11	-	1248	317	48.5	17	1510.0	3330	2.20	31	122	A6
13.6-28	6	T/T	W12	-	1320	350	52.4	16	1430.0	3155	1.60	23	120	A6
	8	T/T	W12	-	1320	350	52.4	16	1645.0	3625	2.00	28	124	A6
14.9-28	6	T/T	W13	-	1378	385	54.8	16	1610.0	3550	1.40	20	124	A6
	8	T/T	W13	-	1378	385	54.8	16	1865.0	4110	1.80	26	129	A6
14.9-30	8	T/T	W13	-	1419	384	54.5	18	1930.0	4255	1.80	26	130	A6
16.9-30	8	T/T	W15L	-	1490	445	58.0	19	2245.0	4950	1.60	23	136	A6
18.4-30	8	T/T	W16L	-	1533	467	49.5	20	2510.0	5530	1.60	23	140	A6
12.4-32	8	T/T	W11	-	1360	315	48.5	19	1545.0	3405	2.00	28	122	A8
16.9-34	8	T/T	W15L	-	1575	445	58.0	20	2385.0	5260	1.60	23	138	A6
18.4-34	10	T/T	W16L	-	1635	477	49.5	21	2775.0	6115	1.60	23	143	A6
13.6-36	6	T/T	W12	-	1521	351	55.3	19	1615.0	3560	1.60	23	124	A6
	8	T/T	W12	-	1521	351	55.3	19	1890.0	4165	2.00	28	129	A6
13.6-38	8	T/T	W12	-	1570	350	56.5	20	1910.0	4210	2.00	28	130	A8
16.9-38	8	T/T	W15L	-	1695	431	57.7	22	2520.0	5555	1.60	23	140	A6
18.4-38	8	T/T	W16L	-	1758	467	49.5	22	2715.0	5985	1.40	20	142	A6



532

501A

532

*R-1W

SIZE	PR	TYPE	APPRVD. RIM	PERMISSIBLE RIMS (inch)	O.D.(mm)	O.W.(mm)	S.D.(mm)	PITCH (ea)	MAX.LOAD		INFLATION		LI	SS
									kg	lbs	kg/cm ²	psi		
9.5-16	6	T/T	W8	-	845	240	32.0	15	725.0	1600	2.20	32	96	A6
11.2-20	8	T/T	W9	-	995	275	43.7	14	1120.0	2470	2.40	34	112	A6
11.2-24	8	T/T	W10	-	1108	284	49.0	14	1135.0	2500	2.40	34	112	A6
13.6-24	6	T/T	W12	-	1210	340	57.0	15	1340.0	2954	1.75	25	122	A6
14.9-24	6	T/T	W13	-	1268	385	49.0	15	1510.0	3329	1.40	20	122	A6
	8	T/T	W13	-	1268	385	49.0	15	1750.0	3858	1.80	26	127	A6
13.6-26	8	T/T	W11	-	1268	341	49.0	17	1580.0	3483	2.00	28	123	A6

501A

*R-1W

SIZE	PR	TYPE	APPRVD. RIM	PERMISSIBLE RIMS (inch)	O.D.(mm)	O.W.(mm)	S.D.(mm)	PITCH (ea)	MAX.LOAD		INFLATION		LI	SS
									kg	lbs	kg/cm ²	psi		
5.00-12	4	T/T	3.00	-	585	130	23.5	12	255.0	562	2.00	28	60	A6
6.00-12	4	T/T	4.00	-	632	158	26.0	13	325.0	716	1.80	26	69	A6
7-14	4	T/T	5JA	-	690	170	25.0	14	370.0	815	1.80	26	73	A6
	6	T/T	5JA	-	690	170	25.0	14	440.0	970	2.40	34	79	A6
	6	T/L	5JA	-	690	170	25.0	14	440.0	970	2.40	34	79	A6
6.00-16	4	T/T	4.00	-	735	165	26.0	13	420.0	926	2.00	28	77	A6

TT = TUBE TYPE / TL = TUBELESS



620

620

*R-1

SIZE	PR	TYPE	APPRVD. RIM	PERMISSIBLE RIMS (inch)	O.D.(mm)	O.W.(mm)	S.D.(mm)	PITCH (ea)	MAX.LOAD		INFLATION		LI	SS
									kg	lbs	kg/cm ²	psi		
9.5-22	8	T/T	W8	-	1010	241	28.0	19	1090.0	2405	3.00	43	111	A8
9.5-24	8	T/T	W8	-	1060	241	30.0	20	1130.0	2490	3.00	43	112	A6
11.2-20	8	T/T	W10	-	1000	280	32.5	16	1120.0	2470	2.40	34	112	A6
11.2-24	8	T/T	W10	-	1110	280	32.0	18	1135.0	2500	2.40	34	112	A6
12.4-24	8	T/T	W11	-	1172	320	33.0	18	1445.0	3185	2.20	32	120	A6
13.6-24	8	T/T	W12	-	1200	345	34.5	18	1615.0	3560	2.20	32	124	A6
14.9-24	8	T/T	W13	-	1255	378	34.5	18	1750.0	3860	1.80	26	127	A6
12.4-28	6	T/T	W11	-	1260	320	33.0	19	1275.0	2810	1.60	23	116	A6
	8	T/T	W11	-	1260	320	33.0	19	1510.0	3330	2.20	32	122	A6
13.6-28	8	T/T	W12	-	1310	335	35.0	19	1645.0	3625	2.00	28	124	A6
	10	T/T	W12	-	1310	335	35.0	19	1910.0	4210	2.50	36	130	A6
14.9-28	6	T/T	W13	-	1365	385	35.0	19	1610.0	3550	1.40	20	124	A6
	8	T/T	W13	-	1365	385	35.0	19	1865.0	4110	1.80	26	129	A6
	10	T/T	W13	-	1365	385	35.0	19	2120.0	4675	2.30	33	134	A6
16.9-28	6	T/L	W15L	-	1426	435	37.0	19	1830.0	4035	1.30	18	128	A6
	8	T/T	W15L	-	1426	435	37.0	19	1950.0	4300	1.70	24	131	A6
	10	T/T	W15L	-	1426	435	37.0	19	2430.0	5355	2.00	28	139	A6
	10	T/L	W15L	-	1426	435	37.0	19	2430.0	5355	2.00	28	139	A6
	12	T/T	W15L	-	1426	435	37.0	19	2725.0	6010	2.40	35	139	A6
14.9-30	8	T/T	W13	-	1405	385	35.0	19	1930.0	4255	1.80	26	130	A6
	10	T/T	W13	-	1405	385	35.0	19	2190.0	4830	2.30	33	135	A6
16.9-30	8	T/T	W15L	-	1485	435	37.0	20	2245.0	4950	1.60	23	136	A6
	10	T/T	W15L	-	1485	435	37.0	20	2730.0	6020	2.40	34	143	A6
	14	T/T	W15L	-	1485	435	37.0	20	2850.0	6285	2.60	37	144	A6
18.4-30	8	T/T	W16L	-	1550	480	38.0	20	2510.0	5535	1.60	23	140	A6
	10	T/T	W16L	-	1550	480	38.0	20	2900.0	6395	1.80	26	145	A6
16.9-34	8	T/T	W15L	-	1580	437	37.0	20	2385.0	5260	1.60	23	138	A6
18.4-34	10	T/T	W16L	-	1650	480	38.0	20	2775.0	6120	1.60	23	143	A6
13.6-38	8	T/T	W12	-	1565	345	35.0	23	1910.0	4210	2.00	28	130	A8
18.4-38	8	T/T	W16L	-	1750	480	38.0	21	2715.0	5985	1.40	20	142	A6
	10	T/T	W16L	-	1750	480	38.0	21	3160.0	6965	1.80	26	148	A6



601

601

*LONG MILEAGE R-1

SIZE	PR	TYPE	APPRVD. RIM	PERMISSIBLE RIMS (inch)	O.D.(mm)	O.W.(mm)	S.D.(mm)	PITCH (ea)	MAX.LOAD		INFLATION		LI	SS
									kg	lbs	kg/cm ²	psi		
7.5L-15	8	T/T	6.00	-	772	222	23.0	17	800.0	1764	3.70	54	100	A8
	6	T/L	6.00	-	740	183	25.0	16	500.0	1100	2.60	37	84	A6
7-16	10	T/L	6.00	-	740	183	25.0	16	670.0	1480	4.20	60	84	A6
	4	T/L	6.00	-	790	201	25.0	16	475.0	1045	1.60	23	82	A6
8-16	6	T/L	6.00	-	790	201	25.0	16	600.0	1325	2.40	34	90	A6
	10	T/L	6.00	-	790	201	25.0	16	850.0	1870	3.30	48	90	A6
9.5-16	6	T/L	8.00	-	848	248	30.0	16	725.0	1600	2.20	31	96	A6
9.5-20	6	T/T	8.00	-	946	240	31.0	18	840.0	1850	2.20	32	101	A6
	6	T/L	8.00	-	946	240	31.0	18	840.0	1850	2.20	32	101	A6
11.2-20	8	T/T	9.00	-	999	278	32.0	18	1120.0	2470	2.40	34	112	A6
11.2-24	6	T/L	10.00	-	1100	280	32.0	17	1045.0	2305	1.80	26	109	A6
	6	T/T	11.00	-	1150	318	37.0	18	1200.0	2645	1.60	23	114	A6
12.4-24	6	T/L	11.00	-	1150	318	37.0	18	1200.0	2645	1.60	23	114	A6
	8	T/T	11.00	-	1150	318	37.0	18	1445.0	3185	2.20	32	120	A6
13.6-24	6	T/L	12.00	-	1210	345	36.0	19	1340.0	2955	1.60	23	118	A6
	8	T/L	12.00	-	1210	345	36.0	19	1615.0	3560	2.20	32	124	A6
	8	T/T	12.00	-	1210	345	36.0	19	1615.0	3560	2.20	32	124	A6
14.9-24	6	T/T	12.00	-	1275	375	37.0	19	1510.0	3330	1.40	20	122	A6
	6	T/L	12.00	-	1275	375	37.0	19	1510.0	3330	1.40	20	122	A6
	8	T/T	12.00	-	1275	375	37.0	19	1750.0	3850	1.80	26	127	A6
16.9-24	8	T/L	12.00	-	1275	375	37.0	19	1750.0	3850	1.80	26	127	A6
	6	T/T	15.00	-	1340	445	36.0	18	1550.0	3417	1.20	17	123	A8
16.9-24	6	T/L	15.00	-	1340	445	36.0	18	1550.0	3417	1.20	17	123	A8
	6	T/T	11.00	-	1260	320	36.6	20	1275.0	2810	1.60	23	116	A6
12.4-28	6	T/L	11.00	-	1260	320	36.6	20	1275.0	2810	1.60	23	116	A6
	8	T/T	11.00	-	1260	320	36.6	20	1510.0	3325	2.20	32	122	A6
14.9-28	8	T/T	13.00	-	1378	378	34.0	18	1865.0	4110	1.80	26	129	A6
	10	T/T	13.00	-	1378	378	34.0	18	2090.0	4610	2.20	32	133	A6
	10	T/L	13.00	-	1378	378	34.0	18	2090.0	4610	2.20	32	133	A6
14.9-30	8	T/T	13.00	-	1430	398	34.0	19	1930.0	4255	1.80	26	130	A6
16.9-30	6	T/L	15.00	-	1490	445	36.0	21	1900.0	4190	1.20	17	130	A6
	8	T/T	15.00	-	1490	445	36.0	21	2245.0	4950	1.60	23	136	A6
	8	T/L	15.00	-	1490	445	36.0	21	2245.0	4950	1.60	23	136	A6
18.4-30	8	T/T	16.00	-	1540	480	38.0	20	2510.0	5530	1.60	23	140	A6
	12	T/T	16.00	-	1540	480	38.0	20	3250.0	7170	2.30	33	149	A6
	12	T/L	16.00	-	1540	480	38.0	20	3250.0	7170	2.30	33	149	A6
18.4-34	14	T/T	16.00	-	1540	480	38.0	20	3405.0	7510	2.60	38	150	A6
	6	T/L	16.00	-	1635	482	38.0	22	2250.0	4960	1.20	17	136	A6
	8	T/T	16.00	-	1635	482	38.0	22	2565.0	5655	1.40	20	140	A6
18.4-34	10	T/T	16.00	-	1635	482	38.0	22	2775.0	6120	1.60	23	143	A6

TT = TUBE TYPE / TL = TUBELESS

TRACTOR R-1 / LONG MILEAGE R-1



605



632

605

*R-1W

SIZE	PR	TYPE	APPRVD. RIM	PERMISSIBLE RIMS (inch)	O.D.(mm)	O.W.(mm)	S.D.(mm)	PITCH (ea)	MAX.LOAD		INFLATION		LI	SS
									kg	lbs	kg/cm ²	psi		
5-12	4	T/T	4.00	-	545	127	22.0	12	220.0	485	2.40	34	55	A6
6-14	4	T/T	5JA	-	648	157	22.5	14	305.0	670	2.00	28	66	A6
	6	T/T	5JA	-	648	157	22.5	14	370.0	815	2.80	40	73	A6
7-16	4	T/T	5JA	-	740	175	27.2	15	405.0	890	1.80	26	76	A6
	6	T/T	5JA	-	740	175	27.2	15	500.0	1100	2.60	37	84	A6
8-16	4	T/T	W6	-	789	201	28.6	13	475.0	1045	1.60	23	82	A6
	6	T/T	W6	-	789	201	28.6	13	600.0	1325	2.40	34	90	A6
8-18	4	T/T	W6	-	837	197	30.0	14	520.0	1145	1.60	23	85	A6
	6	T/T	W6	-	837	197	30.0	14	660.0	1455	2.40	34	93	A6
	8	T/T	W6	-	837	197	30.0	14	780.0	1720	3.20	46	99	A6

632

*R-1W

SIZE	PR	TYPE	APPRVD. RIM	PERMISSIBLE RIMS (inch)	O.D.(mm)	O.W.(mm)	S.D.(mm)	PITCH (ea)	MAX.LOAD		INFLATION		LI	SS
									kg	lbs	kg/cm ²	psi		
11.2-20	8	T/T	W9	-	995	284	49.0	14	1120.0	2469	2.40	34	112	A6
8.3-24	6	T/T	W7	-	1000	214	38.0	14	810.0	1786	2.40	34	100	A6
11.2-24	8	T/T	W10	-	1110	290	45.0	14	1135.0	2502	2.40	34	112	A6
12.4-24	8	T/T	W11	-	1156	320	46.5	14	1445.0	3186	2.20	32	120	A6
14.9-28	8	T/T	W13	-	1360	385	50.0	16	1865.0	4112	1.80	26	129	A6
14.9-30	8	T/T	W13	-	1420	380	49.0	18	1930.0	4255	1.80	26	130	A6
16.9-30	8	T/T	W15L	-	1485	435	54.5	19	2245.0	4949	1.60	23	136	A6
16.9-34	8	T/T	W15L	-	1575	435	56.0	20	2385.0	5260	1.60	23	138	A6



458

602

618

458

*R-1

SIZE	PR	TYPE	APPRVD. RIM	PERMISSIBLE RIMS (inch)	O.D.(mm)	O.W.(mm)	S.D.(mm)	PITCH (ea)	MAX.LOAD		INFLATION		LI	SS
									kg	lbs	kg/cm ²	psi		
6-12	4	T/T	5JA	-	580	152	15.0	16	268.0	590	2.00	28	62	A6
	4	T/L	5JA	-	580	152	15.0	16	268.0	590	2.00	28	62	A6
7-12	6	T/T	5JA	-	615	168	18.5	17	390.0	860	2.30	33	75	A6
	6	T/L	5JA	-	615	168	18.5	17	390.0	860	2.30	33	75	A6
11.2-16	6	T/T	W10L	-	902	305	35.0	17	755.0	1665	2.20	32	98	A6
	6	T/L	W10L	-	902	305	35.0	17	755.0	1665	2.20	32	98	A6

602

*R-1W

SIZE	PR	TYPE	APPRVD. RIM	PERMISSIBLE RIMS (inch)	O.D.(mm)	O.W.(mm)	S.D.(mm)	PITCH (ea)	MAX.LOAD		INFLATION		LI	SS
									kg	lbs	kg/cm ²	psi		
6.00-12	4	T/T	4.00	-	632	158	22.0	13	325.0	715	1.80	26	69	A6
11.2-24	4	T/T	W10	-	1105	283	42.5	15	845.0	1860	1.20	17	102	A6
	6	T/T	W10	-	1105	283	42.5	15	1045.0	2300	1.80	26	109	A6
	8	T/T	W10	-	1105	283	42.5	15	1235.0	2720	2.40	34	115	A6
12.4-38	8	T/T	W11	-	1515	315	37.0	24	1780.0	3900	2.20	32	127	A6

> FRONT

618

*F-2

SIZE	PR	TYPE	APPRVD. RIM	PERMISSIBLE RIMS (inch)	O.D.(mm)	O.W.(mm)	S.D.(mm)	PITCH (ea)	MAX.LOAD		INFLATION		LI	SS
									kg	lbs	kg/cm ²	psi		
7.50-16	8	T/T	5.50	-	803	211	9.0	-	775.0	1710	3.65	52	99	A8
	10	T/T	5.50	-	803	211	9.0	-	900.0	1985	3.90	56	104	A8

TT = TUBE TYPE / TL = TUBELESS



HYBRID

FIELD

ROAD

TURF



VARIOUS USE



NEW

HS623

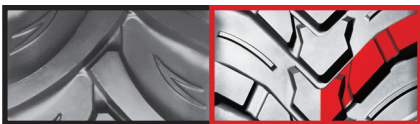
**HYBRID
TRACTOR TIRE**



SNOW

TECHNOLOGY HS623

VERSATILE, "3 IN 1" TIRE TECHNOLOGY



R1(BAR)

+



R3(TURF)

+



R4(IND)

Adaptive design for optimized performance from road to fields



COMFORT ON THE ROAD

Excellent stability at speed

HYBRID

> HYBRID

623

SIZE	PR	TYPE	APPRVD. RIM	O.D.(mm)	O.W.(mm)	S.D.(mm)	PITCH (ea)	MAX.LOAD		INFLATION		LI	SS	REMARKS
								kg	lbs	kg/cm ²	psi			
18X8.50-10(195/50-10)	6	T/L	7.00	453	200	10.5	16	400.0	880	2.20	32	76	A8	@40km/h
23X8.50-12	6	T/L	7.00	578	213	11.5	19	560.0	1230	2.40	34	88	A8	@40km/h
26X12.00-12	6	T/L	10.50	658	303	13.5	16	975.0	2150	2.10	30	107	A8	@40km/h
25X8.50-14	6	T/L	7.00	644	218	11.0	19	630.0	1390	2.20	32	92	A8	@40km/h
27X8.50-15	6	T/L	7.00	686	216	12.0	23	710.0	1570	3.10	45	96	B	@50km/h
28X8.50-15	6	T/L	7.00	715	222	14.0	22	850.0	1870	3.10	45	102	A8	@40km/h
10-16.5(265/70-16.5)	6	T/L	8.25	785	268	14.0	22	1060.0	2340	3.10	45	110	A8	@40km/h
12-16.5	6	T/L	9.75	845	307	15.5	20	1250.0	2760	2.80	40	116	A8	@40km/h
14-17.5(350/70-17.5)	6	T/L	10.50	937	360	17.0	20	1450.0	3200	2.10	30	121	A8	@40km/h
10.5/80-18	6	T/L	W9	897	274	23.0	22	1285.0	2830	2.30	33	117	A8	@40km/h
15-19.5	6	T/L	11.75	1019	389	21.0	22	1850.0	4080	2.10	30	129	A8	@40km/h
43X16.00-20(410/70-20)	6	T/L	W14L	1110	410	22.0	19	1850.0	4080	2.10	30	129	B	@50km/h
17.5L-24	6	T/L	W15L	1241	445	26.0	18	2000.0	4400	1.40	20	132	A8	@40km/h
16.9-24	6	T/L	W15L	1290	437	27.0	20	2240.0	4940	1.50	22	136	A8	@40km/h

TT = TUBE TYPE / TL = TUBELESS



LAWN & GARDEN



482



612

> **LAWN & GARDEN**

482

*R-3

SIZE	PR	TYPE	APPRVD. RIM	O.D.(mm)	O.W.(mm)	S.D.(mm)	PITCH (ea)	MAX.LOAD		INFLATION		LI	SS
								kg	lbs	kg/cm ²	psi		
16X7.50-8	4	T/L	5.38	415	176	9.0	-	306.0	670	1.70	24	66	A3
18X8.50-8	4	T/L	7.00	453	202	9.0	-	370.0	815	1.50	22	73	A3
18X8.50-10(195/50-10)	4	T/L	7.00	453	200	7.5	-	375.0	825	1.50	22	74	A4
20X8.00-10	4	T/L	6.00	500	200	8.0	-	410.0	910	1.70	24	76	A3
23X8.50-12	4	T/L	7.00	575	214	9.0	-	505.0	1115	1.50	22	84	A4
	6	T/L	7.00	575	214	9.0	-	650.0	1433	2.40	34	93	A3
24X12.00-12	4	T/L	10.50	605	310	9.0	-	775.0	1710	1.40	20	99	A3
26X12.00-12	4	T/L	10.50	655	302	12.0	-	810.0	1785	1.40	20	100	A4
25X8.50-14	6	T/L	7.00	643	220	8.8	-	745.0	1640	2.20	32	97	A6
	8	T/L	7.00	643	220	8.8	-	900.0	1985	3.00	43	104	A6
27X8.50-15	4	T/L	7.00	680	214	9.0	-	560.0	1235	2.10	30	88	A4
	6	T/L	7.00	680	214	9.0	-	775.0	1705	2.40	35	99	A4
36X13.50-15	4	T/L	10.00	914	360	9.5	-	1180.0	2600	1.40	20	114	A6
27X10.50-15	4	T/L	8.00	691	259	9.0	-	600.0	1325	2.10	30	90	A6
	10	T/L	8.00	691	259	9.0	-	1000.0	2200	5.20	75	108	A6
28X8.50-15	4	T/L	7.00	711	215	9.0	-	650.0	1430	2.10	30	-	-
29X12.50-15	4	T/L	10.00	742	300	9.5	-	600.0	1320	1.40	20	90	B
345/80-16	4	T/L	12.00	980	365	19.0	-	710.0	1570	1.00	14	96	A8
	8	T/L	12.00	980	365	19.0	-	1060.0	2340	1.90	28	110	A8
33X12.50-16.5(320/65-16.5)	4	T/L	9.75	830	320	9.5	-	1061.0	2340	2.10	30	110	B
41X14.00-20	4	T/L	11.00	1067	369	17.5	-	1415.0	3120	1.70	25	120	A4
44X18.00-20	4	T/L	14.00	1150	464	20.0	-	1550.0	3415	1.40	20	123	B

612

*R-4

SIZE	PR	TYPE	APPRVD. RIM	O.D.(mm)	O.W.(mm)	S.D.(mm)	PITCH (ea)	MAX.LOAD		INFLATION		LI	SS
								kg	lbs	kg/cm ²	psi		
205/60-12	4	T/L	7.00	574	213	11	17	667.0	1470	2.50	36	93	A2
305/70-16.5	6	T/L	9.75	850	312	15.5	19	1915.0	4220	2.80	40	130	A2

TT = TUBE TYPE / TL = TUBELESS



610

610

*R-4

SIZE	PR	TYPE	APPRVD. RIM	O.D.(mm)	O.W.(mm)	S.D.(mm)	PITCH (ea)	MAX.LOAD		INFLATION		LI	SS
								kg	lbs	kg/cm ²	psi		
18X8.50-10	4	T/L	7.00	453	200	13.0	19	375.0	825	1.50	22	74	A4
	6	T/L	7.00	453	200	13.0	19	490.0	1080	2.40	34	83	A4
20X8.00-10(195/60-10)	4	T/L	6.00	494	196	11.0	15	550.0	1215	2.80	40	87	A2
165/60-12	6	T/L	5.00	540	162	10.0	17	510.0	1125	3.10	45	-	-
23X8.50-12	4	T/L	7.00	574	213	11.0	17	667.0	1470	2.50	36	93	A2
	6	T/L	7.00	574	213	11.0	17	820.0	1810	3.50	50	100	A2
26X12.00-12(305/55-12)	4	T/L	10.50	653	303	15.5	22	810.0	1785	1.40	20	100	A4
25X8.50-14	6	T/L	7.00	655	220	15.0	20	965.0	2130	3.50	50	106	A2
27X8.50-15	6	T/L	7.00	686	216	14.0	22	710.0	1565	3.10	45	96	B
27X12.50-15	4	T/L	10.00	713	285	13.5	17	1060.0	2335	1.80	26	110	A2
28X8.50-15	6	T/L	7.00	715	225	15.0	22	1305.0	2875	3.10	45	-	-
10-16.5(265/70-16.5)	6	T/L	8.25	789	264	15.5	23	1610.0	3550	3.25	46	124	A2
12-16.5(305/70-16.5)	4	T/L	9.75	830	310	15.5	19	1615.0	3560	2.10	30	124	A2
	6	T/L	9.75	830	310	15.5	19	1915.0	4220	2.80	40	130	A2
14-17.5(350/70-17.5)	4	T/L	10.50	937	356	19.0	23	1700.0	3750	1.40	20	126	A2
	6	T/L	10.50	937	356	19.0	23	2185.0	4820	2.10	30	135	A2
	14	T/L	10.50	937	356	19.0	23	3875.0	8540	5.60	80	155	A2
10.5/80-18	6	T/L	W9	907	270	23.0	28	1450.0	3195	2.20	32	121	A6
10.5/80-18	10	T/L	W9	907	270	23.0	28	1935.0	4265	3.80	54	-	-
15-19.5(380/70-19.5)	6	T/L	11.75	1019	389	21.0	22	2780.0	6130	2.10	30	143	A2
	8	T/L	11.75	1019	389	21.0	22	3290.0	7250	2.80	40	149	A2
43X16.00-20(410/70-20)	4	T/L	W14L	1110	410	21.0	22	1340.0	2950	1.40	20	118	A6
	6	T/L	W14L	1110	410	21.0	22	1685.0	3720	2.10	30	125	A6
14.9-24	6	T/L	W12	1236	387	28.0	18	1950.0	4300	1.70	24	131	A2
	8	T/L	W12	1236	387	28.0	18	2300.0	5080	2.10	30	137	A2
	12	T/L	W12	1236	387	28.0	18	2900.0	6400	2.95	42	145	A2
420/70-24	6	T/L	W15L	1193	443	27.0	17	1795.0	3960	1.40	20	127	A8
	12	T/L	W15L	1193	443	27.0	17	2430.0	5360	2.40	35	139	A8
16.9-24	6	T/L	W15L	1313	442	27.0	18	2240.0	4940	1.50	22	136	A8
	10	T/L	W15L	1313	442	27.0	18	2900.0	6390	2.20	32	145	A8
	12	T/L	W15L	1313	442	27.0	18	3250.0	7160	2.70	38	149	A8
17.5L-24	6	T/L	W15L	1241	445	26.0	18	2000.0	4410	1.40	20	132	A6
	12	T/L	W15L	1241	445	26.0	18	2995.0	6610	2.50	36	145	A2
18.4-24	8	T/L	W15L	1375	457	27.0	17	2900.0	6400	1.70	24	145	A8
19.5L-24	8	T/L	W16L	1314	480	26.5	15	2725.0	6000	1.70	24	143	A8
	12	T/L	W16L	1314	480	26.5	15	3450.0	7600	2.40	34	151	A8

TT = TUBE TYPE / TL = TUBELESS



481



486



487



> GOLF CART

481

SIZE	PR	TYPE	APPRVD. RIM	O.D.(mm)	O.W.(mm)	S.D.(mm)	PITCH (ea)	MAX.LOAD		INFLATION		LI	SS
								kg	lbs	kg/cm ²	psi		
18X8.50-8	4	T/L	7.00	452	213	7.1	-	370.0	815	1.50	22	73	A3
	6	T/L	7.00	452	213	7.1	-	475.0	1045	2.40	34	82	A3

486

SIZE	PR	TYPE	APPRVD. RIM	O.D.(mm)	O.W.(mm)	S.D.(mm)	PITCH (ea)	MAX.LOAD		INFLATION		LI	SS
								kg	lbs	kg/cm ²	psi		
18X8.50-8	6	T/L	7.00	455	210	6.0	-	475.0	1045	2.40	34	82	A3

487

SIZE	PR	TYPE	APPRVD. RIM	O.D.(mm)	O.W.(mm)	S.D.(mm)	PITCH (ea)	MAX.LOAD		INFLATION		LI	SS
								kg	lbs	kg/cm ²	psi		
190/50-12	6	T/L	6.00	510	185	6.0	-	550.0	1210	3.10	45	-	-



476



619



475

> **ATV**

476

SIZE	PR	TYPE	APPRVD. RIM	O.D.(mm)	O.W.(mm)	S.D.(mm)	PITCH (ea)	MAX.LOAD		INFLATION		LI	SS
								kg	lbs	kg/cm ²	psi		
19X7-8	4	T/L	5.50	483	177	8.0	-	80.0	175	0.35	5	-	-
18X9.5-8	4	T/L	7.00	457	230	8.0	-	100.0	220	0.35	5	-	-
20X7-8	4	T/L	5.50	508	177	9.0	-	87.5	193	0.35	5	-	-
22X10-8	4	T/L	8.00	559	244	9.0	-	136.0	300	0.35	5	-	-

619

SIZE	PR	TYPE	APPRVD. RIM	O.D.(mm)	O.W.(mm)	S.D.(mm)	PITCH (ea)	MAX.LOAD		INFLATION		LI	SS
								kg	lbs	kg/cm ²	psi		
22X7-10	4	T/L	5.50	560	170	9.0	-	100.0	220	0.35	5	-	-
22X10-10	4	T/L	8.00	560	250	10.5	-	136.0	300	0.35	5	-	-

475

SIZE	PR	TYPE	APPRVD. RIM	O.D.(mm)	O.W.(mm)	S.D.(mm)	PITCH (ea)	MAX.LOAD		INFLATION		LI	SS
								kg	lbs	kg/cm ²	psi		
22X7-10	2	T/L	5.50	555	170	10.0	-	82.0	180	0.21	3	-	-
22X10-10	2	T/L	8.00	560	235	10.0	-	111.0	240	0.21	3	-	-

GOLF CART / ATV



SPEED SPRAYER



440

457

455

456

> **SPEED SPRAYER**

440

SIZE	PR	TYPE	APPRVD. RIM	O.D.(mm)	O.W.(mm)	S.D.(mm)	PITCH (ea)	MAX.LOAD		INFLATION		LI	SS
								kg	lbs	kg/cm ²	psi		
23X10.00-12	6	T/T	8.50	593	255	25.0	11	695.0	1530	2.80	40	95	A3

457

SIZE	PR	TYPE	APPRVD. RIM	O.D.(mm)	O.W.(mm)	S.D.(mm)	PITCH (ea)	MAX.LOAD		INFLATION		LI	SS
								kg	lbs	kg/cm ²	psi		
23X10.00-12	6	T/T	8.50	600	255	25.0	22	695.0	1530	2.80	40	95	A3
	8	T/T	8.50	600	255	25.0	22	845.0	1860	3.75	53	95	A3

455

SIZE	PR	TYPE	APPRVD. RIM	O.D.(mm)	O.W.(mm)	S.D.(mm)	PITCH (ea)	MAX.LOAD		INFLATION		LI	SS
								kg	lbs	kg/cm ²	psi		
26X10.00-12	8	T/T	8.50	660	258	22.0	14	980.0	2160	3.75	53	107	A3

456

SIZE	PR	TYPE	APPRVD. RIM	O.D.(mm)	O.W.(mm)	S.D.(mm)	PITCH (ea)	MAX.LOAD		INFLATION		LI	SS
								kg	lbs	kg/cm ²	psi		
26X10.00-12	8	T/T	8.50	660	260	24.5	13	980.0	2160	3.70	53	107	A3

TT = TUBE TYPE / TL = TUBELESS



656

667

675

657

> SKID LOADER

656

SIZE	PR	TYPE	APPRVD. RIM	O.D.(mm)	O.W.(mm)	S.D.(mm)	PITCH (ea)	MAX.LOAD		INFLATION		LI	SS
								kg	lbs	kg/cm ²	psi		
10-16.5	6	T/L	8.25	780	273	20.0	-	1610.0	3550	3.25	46	124	A2
	8	T/L	8.25	780	273	20.0	-	1820.0	4010	4.00	57	128	A2
	10	T/L	8.25	780	273	20.0	-	2135.0	4707	5.27	75	134	A2
12-16.5	12	T/L	9.75	845	314	20.0	-	2865.0	6315	5.60	80	144	A2
	14	T/L	9.75	845	314	20.0	-	3075.0	6780	6.20	90	147	A2

667

***LONG MILEAGE**

SIZE	PR	TYPE	APPRVD. RIM	O.D.(mm)	O.W.(mm)	S.D.(mm)	PITCH (ea)	MAX.LOAD		INFLATION		LI	SS
								kg	lbs	kg/cm ²	psi		
12-16.5	12	T/L	9.75	842	325	25.0	-	2865.0	6315	5.60	80	144	A2

675

*** DEEP TREAD**

SIZE	PR	TYPE	APPRVD. RIM	O.D.(mm)	O.W.(mm)	S.D.(mm)	PITCH (ea)	MAX.LOAD		INFLATION		LI	SS
								kg	lbs	kg/cm ²	psi		
12-16.5	14	T/L	9.75	845	315	38.0	-	3075.0	6780	6.30	90	147	A2

657

SIZE	PR	TYPE	APPRVD. RIM	O.D.(mm)	O.W.(mm)	S.D.(mm)	PITCH (ea)	MAX.LOAD		INFLATION		LI	SS
								kg	lbs	kg/cm ²	psi		
12-16.5	14	T/L	9.75	840	310	22.0	-	3075.0	6780	6.30	90	147	A2

TT = TUBE TYPE / TL = TUBELESS

HUNG-A CO.,LTD

CORPORATE OFFICE

77, Eosil-ro, Yangsan-si Gyeongsangnam-do, Korea
T 82-55-371-3731, 3734, 3735, 3785 F 82-55-366-4700
www.hunga.com/eng

USA SALES CORPORATION TIRON TIRES AND WHEELS USA INC.

2180 Satellite Blvd Suite 400 Duluth, GA 30097
T 770-239-1858